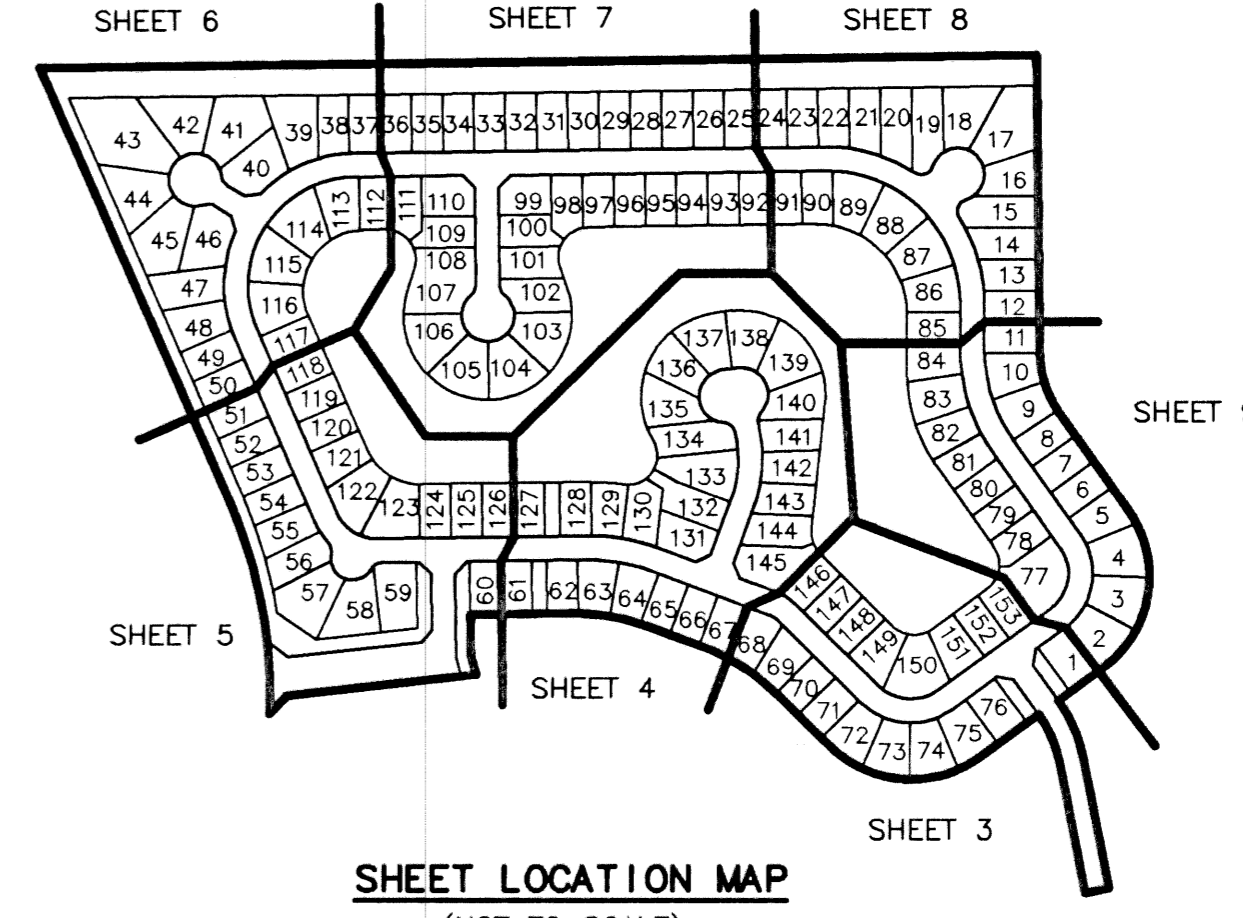
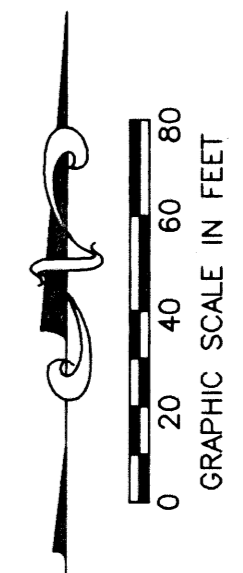
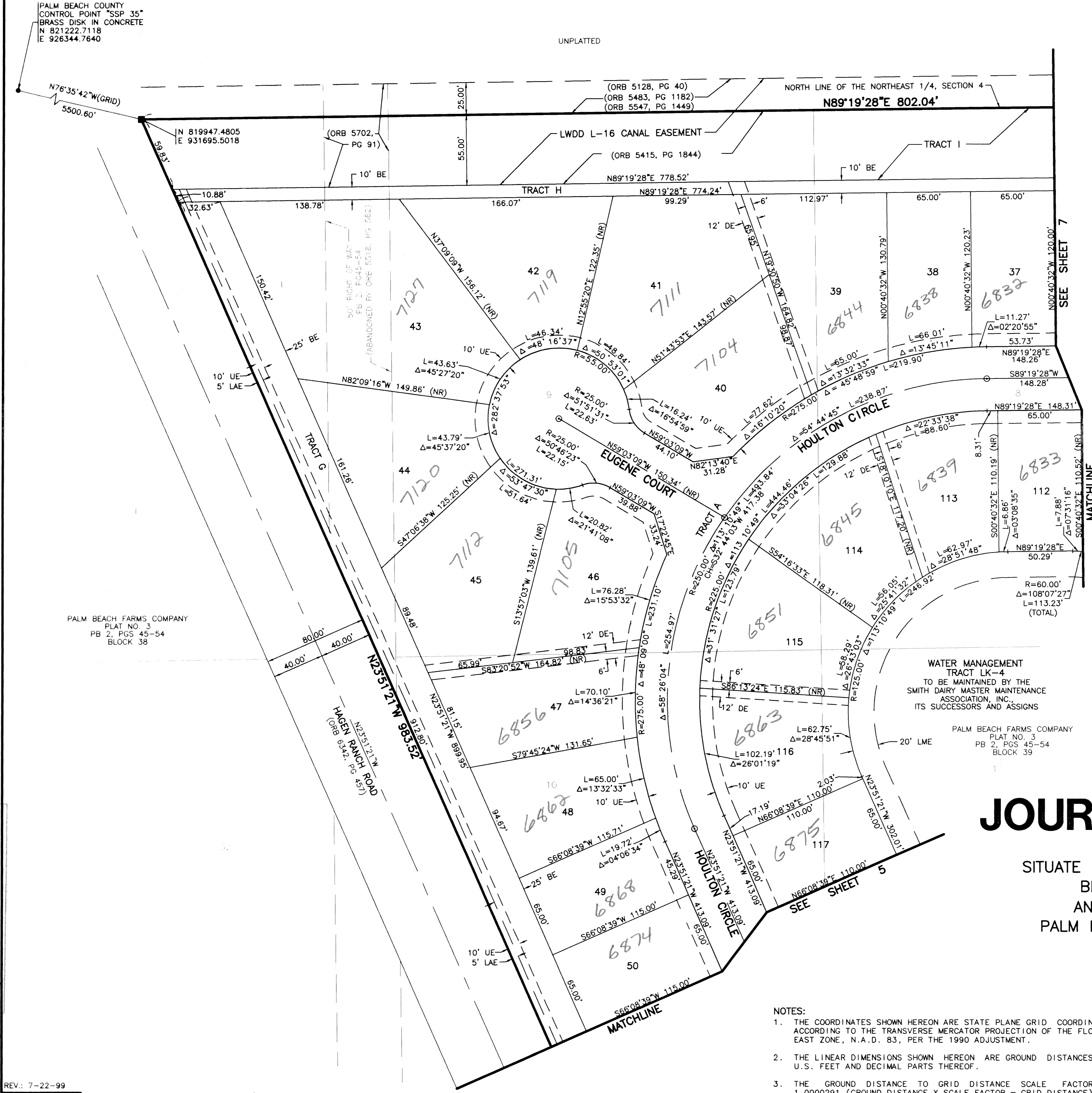


STATE OF FLORIDA  
COUNTY OF PALM BEACH  
THIS PLAT WAS FILED FOR  
RECORD \_\_\_\_\_  
THIS \_\_\_\_\_ DAY OF \_\_\_\_\_  
AD, 2000 AND DULY RECORDED  
IN PLAT BOOK \_\_\_\_\_ ON PAGES  
\_\_\_\_\_ AND \_\_\_\_\_  
DOROTHY H. WILKEN, CLERK  
BY: \_\_\_\_\_, D.C.



SHEET LOCATION MAP  
(NOT TO SCALE)

- LEGEND**
- L ARC LENGTH
  - AE ACCESS EASEMENT
  - BE BUFFER EASEMENT
  - CE CENTRAL (DELTA) ANGLE
  - CH CHORD
  - DE DRAINAGE EASEMENT
  - LAE LIMITED ACCESS EASEMENT
  - LME LAKE MAINTENANCE EASEMENT
  - LMAE LAKE MAINTENANCE ACCESS EASEMENT
  - PUD PLANNED UNIT OF DEVELOPMENT
  - (NR) NON-RADIAL
  - ORB OFFICIAL RECORD BOOK
  - PB PLAT BOOK
  - PG(S) PAGE(S)
  - R RADIUS
  - (TYP) TYPICAL
  - UE UTILITY EASEMENT
  - FOUND LB-048
  - PERMANENT REFERENCE MONUMENT
  - PERMANENT REFERENCE MONUMENT
  - SET LB-048
  - PERMANENT CONTROL POINT
  - SET LB-048
  - ⊙ CENTERLINE



# JOURNEY'S END PLAT THREE

PART OF SMITH DAIRY EAST P.U.D.  
SITUATE IN SECTIONS 3 AND 4, TOWNSHIP 45 SOUTH, RANGE 42 EAST,  
BEING A REPLAT OF A PORTION OF BLOCKS 38 AND 39,  
AND THE 50' RIGHT OF WAY, AS SHOWN ON THE PLAT OF  
PALM BEACH FARMS COMPANY, PLAT NO. 3, PB 2, PGS 45 - 54,  
PALM BEACH COUNTY, FLORIDA  
MAY, 1999 SHEET 6 OF 9

- NOTES:**
- THE COORDINATES SHOWN HEREON ARE STATE PLANE GRID COORDINATES ACCORDING TO THE TRANSVERSE MERCATOR PROJECTION OF THE FLORIDA EAST ZONE, N.A.D. 83, PER THE 1990 ADJUSTMENT.
  - THE LINEAR DIMENSIONS SHOWN HEREON ARE GROUND DISTANCES IN U.S. FEET AND DECIMAL PARTS THEREOF.
  - THE GROUND DISTANCE TO GRID DISTANCE SCALE FACTOR IS 1.000291 (GROUND DISTANCE X SCALE FACTOR = GRID DISTANCE).

THIS INSTRUMENT WAS PREPARED BY DAVID L. SMITH, P.S.M. IN THE OFFICES OF MOCK, ROOS & ASSOCIATES, INC., 5720 CORPORATE WAY, WEST PALM BEACH, FLORIDA 33407.

SCALE:	1"=40'
P.A. NO.:	98082.72
DATE:	MAY 1999
DRAWING NO.:	45-42-03-79

**MOCK • ROOS**  
ENGINEERS • SURVEYORS • PLANNERS  
5720 Corporate Way, West Palm Beach, Florida 33407  
(561) 683-3113, fax 478-7248

JOURNEY'S END PLAT THREE  
PART OF SMITH DAIRY EAST P.U.D.  
SITUATE IN SEC 3 AND 4, TWP 45 S, RGE 42 E,  
BEING A REPLAT OF A PORTION OF BLOCKS 38 AND 39,  
AND THE 50' RIGHT OF WAY, AS SHOWN ON THE PLAT OF  
PALM BEACH FARMS COMPANY, PLAT NO. 3, PB 2, PGS 45-54,  
PALM BEACH COUNTY, FLORIDA

SUBDIVISION Journey's End  
PAGE 124  
FLOOD MAP# 17516  
ZONING SE  
QUAD# 49 434  
TAX 943  
REV. NAME  
REV. DATE  
REV. BY